

Positive Relationships between Association Strength and Phenotypic Similarity Characterize the Assembly of Mixed-Species Bird Flocks Worldwide

Hari Sridhar,¹ Umesh Srinivasan,² Robert A. Askins,³ Julio Cesar Canales-Delgadillo,⁴ Chao-Chieh Chen,⁵ David N. Ewert,⁶ George A. Gale,⁷ Eben Goodale,⁸ Wendy K. Gram,⁹ Patrick J. Hart,¹⁰ Keith A. Hobson,¹¹ Richard L. Hutto,¹² Sarath W. Kotagama,¹³ Jessie L. Knowlton,¹⁴ Tien Ming Lee,¹⁵ Charles A. Munn,¹⁶ Somchai Nimnuan,⁷ B. Z. Nizam,¹⁷ Guillaume Péron,¹⁸ V. V. Robin,² Amanda D. Rodewald,¹⁹ Paul G. Rodewald,¹⁹ Robert L. Thomson,²⁰ Pranav Trivedi,²¹ Steven L. Van Wilgenburg,²² and Kartik Shanker^{1,*}

1. Centre for Ecological Sciences, Indian Institute of Science, Bangalore, India; 2. National Centre for Biological Sciences, Bangalore, India; 3. Department of Biology, Connecticut College, New London, Connecticut 06320; 4. Department of Behavioral Biology, University of Osnabrück, Osnabrück, Germany; 5. Department of Biomedical Science and Environmental Biology, Kaohsiung Medical University, Kaohsiung City, Taiwan; 6. The Nature Conservancy, Lansing, Michigan 48906; 7. Conservation Ecology Program, School of Bioresources and Technology, King Mongkut's University of Technology, Bangkok, Thailand; 8. Section of Ecology, Behavior, and Evolution, Division of Biological Sciences, University of California, San Diego, California 92093; 9. National Ecological Observatory Network, Boulder, Colorado 80301; 10. Department of Biology, University of Hawaii, Hilo, Hawaii 96720; 11. Environment Canada, Gatineau, Quebec K1A 0H3, Canada; 12. Avian Science Center, Division of Biological Sciences, University of Montana, Missoula, Montana 59812; 13. Field Ornithology Group of Sri Lanka, Department of Zoology, University of Colombo, Colombo, Sri Lanka; 14. School of Forest Resources and Environmental Science, Michigan Technological University, Houghton, Michigan 49931; 15. Department of Ecology, Evolution, and Environmental Biology and Earth Institute, Columbia University, New York, New York 10027; 16. SouthWild, Lima, Peru; 17. Department of Zoology, Open University, Nawala, Nugegoda, Sri Lanka; 18. Colorado Cooperative Fish and Wildlife Research Unit, Department of Fish, Wildlife, and Conservation Biology, Colorado State University, Fort Collins, Colorado 80523; and Patuxent Wildlife Research Center, U.S. Geological Survey, Laurel, Maryland 20708; 19. School of Environment and Natural Resources, Ohio State University, Columbus, Ohio 43210; 20. Section of Ecology, Department of Biology, University of Turku, Turku, Finland; 21. Nature Conservation Foundation, Mysore, India; 22. Wildlife and Landscape Science, Science and Technology Branch, Environment Canada, Saskatoon, Saskatchewan S7N 0X4, Canada

Submitted February 10, 2012; Accepted August 1, 2012; Electronically published October 30, 2012

Online enhancement: appendix. Dryad data: <http://dx.doi.org/10.5061/dryad.th198>.

ABSTRACT: Competition theory predicts that local communities should consist of species that are more dissimilar than expected by chance. We find a strikingly different pattern in a multicontinent data set (55 presence-absence matrices from 24 locations) on the composition of mixed-species bird flocks, which are important subunits of local bird communities the world over. By using null models and randomization tests followed by meta-analysis, we find the association strengths of species in flocks to be strongly related to similarity in body size and foraging behavior and higher for congeneric compared with noncongeneric species pairs. Given the local spatial scales of our individual analyses, differences in the habitat preferences of species are unlikely to have caused these association patterns; the patterns observed are most likely the outcome of species interactions. Extending group-living and social-information-use theory to a het-

erospecific context, we discuss potential behavioral mechanisms that lead to positive interactions among similar species in flocks, as well as ways in which competition costs are reduced. Our findings highlight the need to consider positive interactions along with competition when seeking to explain community assembly.

Keywords: community assembly, interspecific competition, meta-analysis, mixed-species flocks, null models, positive interactions.

Introduction

Interspecific competition theory predicts that local communities, either through coevolution or species assortment, will consist of species that are more dissimilar than expected by chance (Dayan and Simberloff 2005). Numerous "assembly rules" (Diamond 1975) have been proposed on the basis of this prediction (Gotelli and Graves 1996; Weiher and Keddy 1999), and empirical support has been found in many cases, although not unequivocally

* Corresponding author; e-mail: kshanker@ces.iisc.ernet.in.

(reviews in Gotelli and McCabe 2002; Webb et al. 2002; Cavender-Bares et al. 2009; Weiher et al. 2011). Expectations based on this prediction are currently expressed in terms of trait dispersion (Webb et al. 2002; Cavender-Bares et al. 2009; Pausas and Verdú 2010). Local communities structured by competition are expected to be phenotypically overdispersed (i.e., consisting of species morphologically or ecologically less similar than expected by chance; but see Mayfield and Levine 2010). At regional spatial scales, as habitat heterogeneity increases, the spatial sorting of species on the basis of habitat or environmental requirements (habitat or abiotic filtering) is likely to result in communities that are phenotypically clumped (i.e., consisting of species that are morphologically or ecologically more similar than expected by chance).

Recent work (Cavender-Bares et al. 2009; Pausas and Verdú 2010) has highlighted the need for community-assembly research to move beyond the competition–habitat filtering dichotomy and consider other processes, in particular, positive interactions (sensu Bertness and Callaway 1994). Although the role of positive interactions in communities has long been recognized (e.g., Bertness and Callaway 1994; Bruno et al. 2003), these interactions are rarely included in our conceptual understanding of communities (but see Gross 2008) or in tests of community assembly (Gross 2008). Similar to competition, positive interactions operate mainly at local spatial scales and can result in local community patterns that are similar or opposite to those produced by competition (Cavender-Bares et al. 2009; Pausas and Verdú 2010). Positive interactions between phenotypically similar species, as observed in cases of social information exchange (Seppänen et al. 2007), Müllerian mimicry rings in butterflies (Elias et al. 2008), and plant species that share pollinators (Sargent and Ackerly 2008), can result in phenotypic clumping. On the other hand, facilitation between dissimilar species, such as that observed between nurse-plant species and seedlings (Valiente-Banuet and Verdú 2007) and between fly-catching and gleaning bird species in mixed-species flocks (e.g., Satischandra et al. 2007), can lead to a whole-community pattern that is indistinguishable from that produced by competition. Therefore, local community assembly must be investigated and interpreted with the use of frameworks that account for both competition and positive interactions rather than just the former, as is currently the trend (Elias et al. 2008; Cavender-Bares et al. 2009; Pausas and Verdú 2010).

In this study we used an approach (following Sfenthourakis et al. 2006) that accounts for both negative and positive interactions, to investigate the assembly of terrestrial mixed-species bird flocks (hereafter, “flocks”). Flocks are roving groups of individuals of two or more species that form in response to foraging or antipredatory

needs (Greenberg 2000). Flocks form important subunits of bird communities the world over and are gaining attention as useful models with which to investigate patterns and processes in communities in general (Goodale et al. 2010; Knowlton and Graham 2011). Flocks present an ideal system with which to investigate species interactions because, given the local spatial scale, the likelihood of habitat filtering is negligible and the patterns observed are, therefore, most likely the outcome of species interactions. Species interactions at the flock scale can potentially influence patterns at higher organizational levels (Seppänen et al. 2007; Goodale et al. 2010). Flocks are expected to be strongly competitively structured because they usually consist of members of the same foraging guild associating in close spatial proximity (Graves and Gotelli 1993; Gómez et al. 2010). Moreover, flocking propensity is generally higher in seasons when resources are scarce (e.g., Devey and Peres 2000) and when bird densities are enhanced through an influx of migrants (especially in tropical areas); both of these factors increase the likelihood of competition. Therefore, studies so far that have examined flock assembly have done so entirely in the context of competition (Graves and Gotelli 1993; Gómez et al. 2010). On the other hand, behavioral studies have documented positive interactions in flocks in terms of the use of heterospecific social information (Goodale and Kotagama 2005), copying of foraging behavior (Krebs 1973), and direct benefits such as feeding on prey flushed by other species’ movements (e.g., Satischandra et al. 2007). Such benefits could in turn lead to higher survival rates for flock participants (Jullien and Clobert 2000). A high prevalence of pairwise positive associations in flocks has also been documented in numerous studies (e.g., Latta and Wunderle 1996a; King and Rappole 2001; Péron and Crochet 2009).

Recent benchmark tests have shown that it is not straightforward to infer relative importance of competition and positive interactions from whole-community metrics of trait dispersion (Ulrich and Gotelli 2012). Therefore, we used a species pairwise approach to investigate flock assembly (Cavender-Bares et al. 2004; Sfenthourakis et al. 2006). By using null models and randomization tests (Gotelli and Graves 1996), we first examined the relationship between association strength and phenotypic similarity of species pairs in flocks. Our measures of phenotypic similarity included body size, foraging behavior, and whether species pairs were congeneric or not. A positive relationship between association strength and phenotypic similarity is indicative of positive interactions between similar species. A negative relationship, however, can indicate either competition between similar species or positive interactions between dissimilar species. Therefore, we also counted the numbers of significant positive and negative pairwise associations in each flock matrix, which allowed

us to infer whether competition or positive interactions might be more important in causing the relationship. Flocks from different parts of the world vary in species composition but are remarkably similar in guild composition and structure; the use of data sets from studies performed in multiple continents allowed us to search for general patterns across species assemblages with different evolutionary histories (Goodale et al. 2010).

Methods

Data Matrices

We compiled data from 24 studies that recorded the occurrences of species in mixed-species flocks (table 1). Our analysis was restricted to roving flocks of insectivores in terrestrial habitats, which are presumably based on social interactions. We excluded other mixed groups such as those composed of frugivores or army-ant followers, which are aggregations of animals at clumped resources (Greenberg 2000). We surveyed a flock bibliography ($N = 342$; Goodale and Sridhar 2010) to identify studies that had data that met our requirements ($N = 73$, including multiple studies based on the same data). If a study's data had been published, we extracted them directly ($N = 6$); otherwise, we contacted authors to request their unpublished data. Authors of 18 studies responded and agreed to share data. The locations of the 24 studies we ultimately included in our analysis spanned four continents and two island groups (table 1). One or more of the authors of this article were involved in data collection for all of these studies except those by Davis (1946) and Croxall (1976). None of the original studies aimed at examining questions related to community assembly; therefore, data are unlikely to be biased in a particular direction with respect to the hypotheses tested here.

Data were represented as presence-absence matrices. In each matrix, rows represented species, columns represented flocks, and cell entries indicated presence (1) or absence (0) of a species in a particular flock. For each study, data from different habitats, elevational zones, or noncontiguous patches or from zones with different levels of human perturbation were represented in different matrices. The result was a total of 55 data matrices across 24 study sites (available in Dryad: <http://dx.doi.org/10.5061/dryad.th198>). We did this to minimize the chance that species occurrence in flocks would be influenced by broad habitat preferences (e.g., Péron and Crochet 2009). However, in sites where flocks are known to be vertically stratified (Munn 1985; Srinivasan et al. 2010), we pooled flocks from different strata (understory and canopy) together in the same matrix. This was done because species are known to join flocks in more than one stratum and flocks from

different strata also often forage jointly; moreover, it is possible that vertical stratification of flocks is in itself an outcome of species interactions, which is the main focus of our study.

Given that sampling was restricted to a single season in all cases except one, association patterns are not influenced by seasonal differences in species occurrences. In the data set for Coahuila (Mexico), sampling was mostly performed during the nonbreeding season but briefly extended into the early breeding season. Our overall results remained qualitatively unchanged when this data set was excluded from analysis. A species was included in a matrix only if it had participated in at least one flock in the area circumscribed by that matrix. Our full data set included 803 bird species representing more than 8% of all known bird species. We also recorded latitude, longitude, biogeographical zone (Ethiopian, Nearctic, Neotropical, Oriental, or Palearctic), and occurrence of human habitat perturbation (present or absent) for each data matrix.

Null Models and Randomization Algorithm

We used a null model implemented through the computer program EcoSim (Gotelli and Entsminger 2001) to randomize each data matrix. The use of the null model approach allowed us to control for differences in species' flocking tendencies and quantify species association in comparison to what is expected by chance. Currently, the null model of choice in community ecology is one that retains both row and column totals (Fayle and Manica 2010). In the context of flocks, however, retaining column totals might be biologically unrealistic. Flocks in a data matrix are only a sample; if sampling is repeated, we are almost certain to get a different set of flock richness values. We therefore used a null model that retained species' occurrences in flocks (row totals) as in the observed flock matrix but treated column totals as probabilities. Pairwise species-association strength values calculated using different null models were strongly correlated in all data matrices ($P < .001$ for all 55 data matrices; see the appendix, available online, for a detailed discussion of null model choice). For each data matrix, 5,000 null matrices were created.

Calculation of Association Strength

Using the EcoSim accessory software *cooc* (Sfenthourakis et al. 2006), we counted the number of flocks in which each species pair co-occurred in a real-data matrix and in each of the corresponding 5,000 null matrices. We then calculated an index of association strength (Srinivasan et al. 2010) for each species pair, as follows:

Table 1: Relationships between association strength and phenotypic similarity and relative proportions of unusual positive (+) and negative (−) pairs in the mixed-species-flock data sets used in this study

Location, type of forest	Flocks	Species	Standardized effect size			Unusual pairs		Reference
			Body size	Foraging guild	Congeneric guild	+	−	
Brazil:								
Teresopolis								Davis 1946
Secondary rain forest	8	10	.78	−.23 ^a	NA	1	0	
Canada:								
Saskatchewan								
Hobson and Van Wilgenburg 2006								
Budworm-infested mature conifer forest	6	5	−.64	NA	NA	0	0	
Uninfested mature deciduous forest	13	7	−.56	−.56 ^b	NA	0	0	
Uninfested young deciduous forest	14	11	.38	−.65 ^b	.10 ^b	0	0	
Budworm-infested mature mixed forest	25	14	−1.25	−.47 ^a	−.60 ^b	3	2	
Uninfested mature mixed forest	44	20	1.19	−.52 ^a	.77 ^b	4	3	
Budworm-infested old mixed forest	57	19	−.11	−.55 ^a	−.46 ^a	3	6	
Uninfested old mixed forest	17	13	.08	−.56 ^a	−.55 ^a	0	2	
Uninfested young mixed forest	8	10	.80	.72 ^a	−.71 ^a	0	1	
Congo:								
Salonga National Park								
Péron and Crochet 2009								
Lowland rain forest—edge	19	21	2.60	.86 ^a	2.79^a	5	0	
Lowland rain forest—interior	31	19	2.28	6.07^a	−.56 ^a	5	1	
Ecuador:								
Guandera Biological Reserve								
Rodewald and Rodewald 2003								
Primary cloud forest	32	21	2.05	.19 ^a	−.48 ^a	10	2	
Secondary cloud forest	18	19	1.54	3.53^a	2.58^a	9	4	
Machalilla National Park								
Knowlton and Graham 2011								
Low-disturbance arid scrub	112	28	1.99	−.61 ^a	NA	24	22	
Moderate-disturbance arid scrub	110	22	−.05	2.65^a	NA	24	9	
Low-disturbance tropical dry forest	97	43	3.41	.01 ^b	1.42 ^b	47	48	
Moderate-disturbance tropical dry forest	115	33	4.25	−.69 ^a	−.56 ^a	46	17	
Hawaii:								
Hakalau Wildlife Refuge								
Hart and Freed 2003								
Old-growth forest	28	8	−1.15	−.67 ^a	−.31 ^a	1	0	
India:								
Anaimalai Hills								
Sridhar and Sankar 2008								
Montane evergreen forest	28	22	.54	−.38 ^a	.38 ^b	1	3	
Midelevation evergreen forest	28	22	.48	−.53 ^b	.36 ^a	11	3	
Midelevation evergreen forest	38	29	4.60	1.35 ^a	1.57 ^a	18	12	
Lowland evergreen forest	30	44	2.72	3.55^a	7.26^a	21	7	
Anshi								
Sridhar and Shanker, unpublished data ^c								
Lowland evergreen forest	188	43	2.63	−.04 ^a	−.68 ^a	117	31	
Arunachal Pradesh								
Srinivasan et al. 2010								
Lowland evergreen forest	95	43	11.29	10.40^a	8.32^a	72	58	
Gujarat								
Trivedi 2006								
Deciduous forest	29	15	2.03	−.72 ^a	−.12 ^b	3	9	
Deciduous forest	32	20	2.85	−.67 ^a	−.18 ^b	3	5	
Parambikulam								
Robin and Davidar 2002								
Moist deciduous forest	117	41	3.62	3.85^a	−.34 ^b	30	16	
Teak plantation	88	37	7.71	1.64 ^a	−.70 ^b	49	25	

Table 1 (Continued)

Location, type of forest	Flocks	Species	Standardized effect size			Unusual pairs		Reference
			Body size	Foraging guild	Congeneric guild	+	-	
Malaysia:								
Fraser's Hill								
Submontane forest—edge	23	23	.19	.06 ^a	-.09 ^a	7	1	Lee et al. 2005
Submontane forest—interior	23	23	.39	15.38^a	7.27^a	7	13	
Submontane forest—urban	30	19	-1.20	1.67 ^a	7.05^a	11	5	
Semengo								
Coastal forest	14	15	-2.10	-.41 ^b	4.53^b	4	6	Croxall 1976
Lowland rain forest	6	13	2.03	-.64 ^a	NA	0	1	
Mexico:								
Coahuila								
Grassland	64	17	.92	.17 ^a	-.36 ^b	3	3	Canales-Delgadillo 2008
El Cielo Biosphere Reserve								
Humid oak-pine forest	9	11	-.74	-.33 ^a	-.21 ^b	1	0	Gram 1998
Dry pine-oak forest	43	25	6.52	3.26^a	1.57 ^a	32	1	
Tropical semideciduous forest	23	16	1.33	.04 ^b	.24 ^a	2	0	Hutto 1994
Cloud forest	15	18	-.44	-.19 ^b	.72 ^a	3	5	
Jalisco								
Lowland deciduous forest	57	20	1.86	.18 ^b	-.25 ^b	26	4	Hutto 1987
Western Mexico								
Boreal forest	5	14	-.67	-.60 ^b	-.57 ^a	0	0	Hutto 1987
Deciduous forest	7	5	-.18	NA	-.69 ^a	0	0	
Evergreen forest	10	9	1.53	NA	.22 ^a	0	0	
Oak forest	4	9	1.34	-.62 ^b	-.93 ^b	0	0	
Pine-oak forest	11	32	-.51	.07 ^b	-.70 ^a	8	7	
Peru:								
Cocha Cashu								
Mature floodplain forest	32	78	-.07	37.28^a	6.53^a	564	399	Munn 1985
Sri Lanka:								
Knuckles Range								
Lowland evergreen forest	26	33	.37	-.17 ^a	-.71 ^a	9	3	Nizam et al. 2007
Midelevation evergreen forest	27	28	2.13	3.66^a	-.53 ^a	4	3	
Montane forest	38	21	-1.35	3.06^a	-.71 ^b	6	9	
Sinharaja								
Rain forest	152	39	2.53	-.34 ^a	.75 ^a	48	18	Kotagama and Goodale 2004
South Africa:								
Nylsvley Nature Reserve								
Acacia woodland	47	22	1.63	1.80 ^a	.43 ^b	4	3	Thomson and Ferguson 2007
Mixed woodland	88	30	.86	5.05^a	4.40^a	15	9	
Taiwan:								
Fushan Experimental Forest								
Subtropical wet forest	126	23	4.26	11.10^a	4.78^a	24	12	Chen and Hsieh 2002
Thailand:								
Khao Yai National Park								
Mature evergreen forest	75	41	12.33	30.77^a	3.48^a	108	64	Nimnuan et al. 2004
U.S. Virgin Islands (St. John and St. Thomas)								
Subtropical moist forest	33	9	-.35	-.25 ^b	-.27 ^b	1	1	Ewert and Askins 1991 and unpublished data ^d
Subtropical moist forest	6	3	-.64	NA	NA	0	0	

Note: Only species that occurred in at least three flocks in a matrix were included in the analyses. Significant standardized effect size values are indicated in bold. NA, not applicable.

^a Higher average association strength observed within guild compared with across guilds.

^b Higher average association strength observed across guilds compared with within guild.

^c Field methods used in this study were the same as those used in the study by Sridhar and Sankar (2008).

^d Field methods used to collect these unpublished data were the same as those used in the published study by Ewert and Askins (1991).

$$\text{association strength} = \frac{O - \mu}{\sigma},$$

where O is the number of co-occurrences in the real-data matrix, μ is the average number of co-occurrences across 5,000 null matrices, and σ is the standard deviation of the number of co-occurrences across the 5,000 null matrices. Our measure of association strength is a dimensionless value that can theoretically range from negative to positive infinity. Negative values indicate avoidance between species, positive values indicate association, and zero indicates no interaction.

We also counted the number of “unusually negative” and “unusually positive” species pairs (Sfenthourakis et al. 2006) in each matrix. Unusually negative and unusually positive pairs were those whose observed number of co-occurrences lay in the lower (<5%) and higher tail (>95%), respectively, of the frequency distribution of expected co-occurrences.

Association strengths and the number of unusual pairs were calculated only for species that occurred in at least three flocks in the data matrix. Species-association patterns inferred from only one or two occurrences in flocks might not be robust and may obscure the overall pattern. Rare species in flocks also often tend to be accidental (*sensu* Farley 2008) participants, that is, those that become caught up in a flock’s movement and are not actually participating in the flock. To examine whether the exclusion of rare species affected our results, we also performed analyses that included all the species that occurred in the data sets we examined. The results of these analyses were qualitatively similar regardless of whether all species or only those species with greater than three occurrences were included.

Measurement of Phenotypic Similarity

Our phenotypic measures included body size and foraging guild. Body-size similarity of species is thought to be a good surrogate for overlap in resource use (Wilson 1975). Body-size ratios of species pairs have previously been related to intensity of competition (Leyequién et al. 2007). Competition is also expected to be strong between species that use food resources in a similar manner (Fox 1987). Both body size and foraging guild have been used extensively in null-model tests of community assembly (Gotelli and Graves 1996; Weiher and Keddy 1999). Body-size similarity of a species pair was calculated as the ratio of the natural logarithms of the body masses of the two species, with the heavier species always being in the denominator (Leyequién et al. 2007). All body-mass values were obtained from Dunning (2008).

Given that most species in mixed-species flocks are insectivorous, we did not use diet categories for foraging

guild; instead, we designated guilds on the basis of foraging behavior (following Remsen and Robinson 1990). As far as was possible, species were assigned to foraging guilds on the basis of field observations; otherwise, information was obtained from appropriate field guides. In all cases, species were assigned to their most frequently used guild. Species that could not be clearly assigned to a guild (~4% of species) were excluded from the foraging guild-level analysis. The guild designations we used varied between study sites, but in each case we consistently tried to achieve as fine a classification as was possible by using the available data. Species pairs were then classified as being from the same or different foraging guilds.

A third measure of phenotypic similarity we used was to determine whether species belonged to the same genus or different genera. This was done on the basis of the assumption that ecologically relevant species traits are phylogenetically conserved. Members of the same genus are often similar in morphology and resource use and show higher levels of aggression toward each other compared with species from different genera (Peiman and Robinson 2010); for this reason, past tests of competition often focused on congeneric pairs (Graves and Gotelli 1993; Sfenthourakis et al. 2006). However, a recent study has shown that species traits, including those relevant for mixed-species flocks, can be evolutionarily labile (Gómez et al. 2010). Therefore, we first examined the levels of similarity among the congeneric species in our data set. The congeneric pairs in our data set were generally similar in body size and foraging guild; in 95% of the congeneric pairs we examined, both members belonged to the same foraging guild, compared with 24% of noncongeneric pairs; body-size ratio (mean \pm SD) was 0.91 ± 0.07 for congeneric pairs, compared with 0.76 ± 0.16 for noncongeneric pairs. Therefore, to a large extent the congeneric guild represents a combination of our other two measures and provides a clear demarcation of phenotypic similarity.

Relation between Association Strength and Phenotypic Similarity

We first examined the relationship between association strength and phenotypic similarity for each data matrix separately. Following the approach of Cavender-Bares et al. (2004), a matrix of pairwise association strengths was related to a matrix of pairwise phenotypic similarity values. Given the nonnormality of data and the nonindependence of species pairs, we performed randomization equivalents of standard parametric tests, using EcoSim (Gotelli and Entsminger 2001). The null hypotheses for randomization tests are subtly different from those for standard parametric tests. Randomization tests examine whether the test statistic is greater than what would be obtained from ran-

domized samples of the same data, whereas parametric methods compare the statistic against a reference distribution. We used randomized Pearson's correlations to examine the relationship between body-size ratios and association strength for species pairs. In the case of foraging and congeneric guilds, randomized ANOVAs were used to compare the average association strengths of species from the same guild and species from different guilds. A total of 1,000 simulations were performed for each test with each data matrix. To make the results comparable across matrices of different sample sizes, we calculated a standardized effect size (SES; Gotelli and McCabe 2002) for each test result, as follows:

$$SES = \frac{\text{observed test statistic} - \text{average of simulated test statistics}}{\text{SD of simulated test statistics}}$$

The test statistics were the product-moment correlation coefficient r in the case of randomized Pearson's correlation and the F -ratio in the case of randomized ANOVA. Theoretically, SES values can range from negative to positive infinity, but the interpretation of the sign (+ or -) varies between the tests. For randomized Pearson's correlations, the sign of an SES value indicates the direction of the relationship, whereas in the case of randomized ANOVA, it indicates whether the difference between the two groups is greater than (+) or less than (-) that expected by chance.

Meta-Analysis

We first examined the influence of site characteristics (latitude, longitude, biogeographical zone, and occurrence of human perturbation) on SES values. Then we examined the overall pattern across data matrices by computing cumulative SES values (Gotelli and McCabe 2002). In the case of the body-size test (randomized Pearson's correlation), we directly calculated the cumulative SES as the average of matrix SES values. In the case of foraging and congeneric guild tests (randomized ANOVA), we modified the original SES values as follows: first, we made all SES values positive by adding a constant such that the smallest SES value was 0. Next, we assigned negative signs to SES values for data matrices in which the average association strength of pairs of species from different guilds was greater than that of pairs of species from the same guild. The SES values of data matrices that showed the opposite pattern were retained as positive. We then calculated cumulative SES as the average of the modified SES values. Using one-sample t -tests, we tested the null hypothesis that the cumulative effect size across all data matrices is 0 (Gotelli and McCabe 2002). Values significantly greater than 0 indicated a positive relationship between association strength and the phenotypic similarity of species in

flocks. Matrices from the same study site likely share many bird species and therefore do not contain independent data points; therefore, we also performed t -tests with cumulative SES recalculated across study sites instead of across individual data matrices.

Results

Relationship between Association Strength and Phenotypic Similarity

Overall, we found strong positive relationships between association strength and phenotypic similarity (table 1; fig. 1). In the case of body size, significant positive correlations between association strength and body-size ratio were detected in 19 of the 55 data matrices, whereas significant negative correlation was detected in only one matrix (table 1). Cumulative SES was significantly greater than 0 when averaged across matrices (one-sample t -test, $P < .0001$; fig. 1A) or study sites (one-sample t -test, $P < .005$), indicating an overall positive relationship between association strength and body-size similarity. In the case of foraging guilds, in 14 matrices, the average association strength was significantly higher for species from the same foraging guild compared with for species from different foraging guilds; the reverse pattern was not observed in any matrix (table 1). Cumulative SES for the foraging-guild test was significantly greater than 0 when averaged across matrices (one-sample t -test, $P < .005$; fig. 1B) or study sites (one-sample t -test, $P < .05$), indicating a higher association strength within the same foraging guild overall. In the congeneric test, a significantly higher average association strength was observed for congenics compared with for noncongenics in 10 matrices, whereas only one matrix revealed the opposite pattern (table 1). The cumulative SES value for the congeneric test was significantly greater than 0 when averaged across matrices (one-sample t -test, $P < .005$; fig. 1B) or study sites (one-sample t -test, $P < .05$), indicating a higher association strength between congenics overall. In all cases latitude, longitude, biogeographical zone, and occurrence of human perturbation did not significantly explain the patterns observed ($P > .05$ with both randomized ANOVA for categorical variables and randomized Pearson's correlation for continuous variables).

Relative Proportions of Unusual Positive and Negative Associations

When summed across all data matrices, unusual positive associations outnumbered unusual negative associations (1,369 vs. 834, respectively; table 1). Of the 302 pairs of congenics in all of the data sets, unusual positive asso-

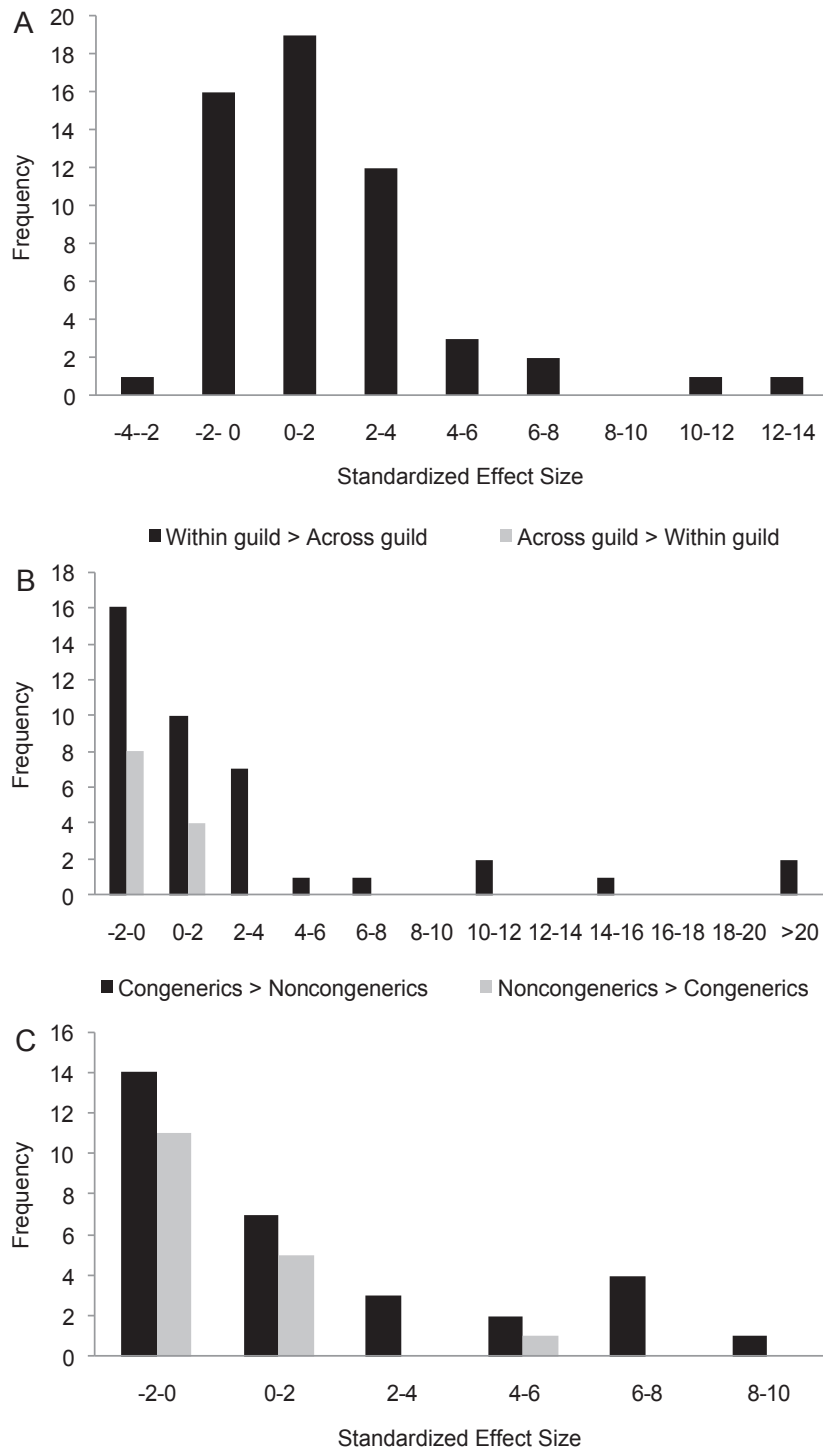


Figure 1: Histograms for standardized effect sizes (SESs) of the relationship between association strength and phenotypic similarity of species in mixed-species bird flocks. *A*, SES scores for randomized Pearson's correlation tests of the relationship between association strength and body-size similarity. *B*, SES scores for randomized ANOVAs where the average association strengths of species pairs within the same foraging guild are compared with those of species pairs across foraging guilds. *C*, SES scores for randomized ANOVAs comparing the average association strengths of congeneric pairs with those of noncongeneric pairs. In *A*, the sign (positive or negative) of the SES value indicates the direction of the relationship; in *B* and *C*, the sign indicates the magnitude of the difference: positive SES values indicate that the difference between the groups was greater than that expected by chance, whereas negative values indicate the opposite.

ciations were observed in 52, whereas unusual negative associations were detected in only 14. Unusual positive associations were predominant even at the individual data-matrix level: the number of unusual positive associations was greater than that of unusual negative associations for 33 matrices, whereas the opposite was true for 12 matrices and 10 matrices revealed equal numbers of unusual positive and unusual negative associations (table 1).

Discussion

As a result of interspecific competition, biological communities at local spatial scales are expected to consist of dissimilar species (Dayan and Simberloff 2005). However, the opposite pattern is observed in mixed-species bird flocks, which are important subunits of bird communities the world over (Goodale et al. 2010). Across 55 data sets from multiple continents, the association strength of species in flocks was positively correlated with phenotypic similarity. Even at the congeneric level, where competition is expected to be the strongest (Graves and Gotelli 1993), we found strong evidence of positive association. These results clearly indicate a pattern of assembly contrary to that generally predicted for communities at local scales. However, it is important to note that our analysis was based entirely on proxies for resource use (body size, foraging guild, and congeners). It is possible that species co-occurring in flocks diverged in other resource use-related traits that we did not measure. Direct measures of resource overlap of flock participants are likely to provide a stronger test of these patterns.

Although the overall pattern revealed by our analysis indicated positive associations between similar species, we highlight a couple of caveats. First, substantial variation in the results was observed among data matrices, including a few that showed relationships that were opposite to the general pattern (table 1). Although we found that site characteristics were not significantly associated with assembly patterns, this observation might in part be due to the low power of these tests. It is likely that a focused study designed to explicitly examine geographical differences might reveal otherwise. For example, although we found no significant effect of latitude, there were noticeable differences between data matrices for temperate and tropical study locations. In contrast to our overall pattern, the former did not show strong relationships between association strength and phenotypic similarity (table 1). Flock formation and flocking propensities of species are known to differ between sites that vary in resource dispersion and predation pressure (e.g., Thiollay 1999); this could, in turn, influence the relative importance of facilitative and competitive interactions in flock assembly. In this context, given that the majority of our data came from tropical

sites (table 1), our findings are more readily extrapolated to tropical bird communities than bird communities in general. The second caveat is that because we considered only presence-absence matrices in our analysis, our findings present a simplified view of flock assembly. Taking into consideration species abundance would likely provide a more nuanced picture of assembly patterns (Graves and Gotelli 1993).

Comparisons with Other Flock Assembly Studies

Graves and Gotelli (1993) found a higher-than-expected number of mutually exclusive distributions among congeners in Peruvian rain forest–understory flocks, a result they interpreted as indicative of competition at the congeneric level. In our study, on the other hand, we found the average association strength of congeneric pairs to be positive overall and higher than that of noncongeneric pairs (table 1). In fact, we found three times as many significant positive associations as negative associations among congeners overall. Graves and Gotelli's (1993) data were included in our analysis, but as part of a larger data matrix that included both canopy and understory flocks from the Peruvian study site (Munn 1985). Nevertheless, to compare our results, we analyzed separately the subset of flocks included in Graves and Gotelli's (1993) data set, using our methods. On the basis of our association-strength index, we found no evidence for strong competition between congeners across all congeneric pairs (average association strength \pm SD, -0.07 ± 1.3). We found equal numbers of positive and negative associations even among significantly associated congeneric pairs. Moreover, a recent reanalysis of Graves and Gotelli's (1993) data set that used all species and included all levels of associations found these flocks to be phylogenetically clumped (Gómez et al. 2010). These contrasting results highlight the importance of using all pairwise associations rather than only extremely negative ones when investigating community assembly (Graves and Gotelli 1993). Interestingly, Gómez et al. (2010) interpreted their results only in terms of the absence of competition and did not discuss the possibility that positive associations contributed to this pattern. However, a higher prevalence of positive compared with negative associations in flocks, in contrast to in communities in general (Sfenthourakis et al. 2006; Gotelli and Ulrich 2010), has been documented in numerous earlier studies (e.g., Latta and Wunderle 1996a; King and Rappole 2001; Péron and Crochet 2009, and references therein). Our results validate this pattern across multiple continents and species assemblages by using a standard measure, and they further demonstrate that positive associations in general do exist between similar species.

Mechanisms of Flock Assembly

Habitat Filtering or Positive Interactions? Positive associations between similar species are generally interpreted as being caused by habitat filtering, that is, spatial sorting of species on the basis of habitat or environmental requirements (Cavender-Bares et al. 2009). Habitat filtering is primarily influential at large spatial scales where environments are sufficiently heterogeneous to allow such sorting to occur (Webb et al. 2002; Cavender-Bares et al. 2009; Pausas and Verdú 2010). In our study, each matrix included only those flocks from a single well-defined habitat. Species associations within each matrix are therefore unlikely to have been caused by broad-scale habitat filtering. Given the spatial proximity and interaction potential of flock members (Graves and Gotelli 1993) and the behavioral evidence for positive interactions in flocks (e.g., Krebs 1973; Goodale and Kotagama 2005; Satischandra et al. 2007), we believe that many of these associations likely reflect direct interactions between species. Nevertheless, it is possible that fine-scale microhabitat selection, which we did not measure in our study, might also play a role in producing some of the species-association patterns reported here (Graves and Gotelli 1993).

Positive Interactions between Similar Species. Species might choose to associate in flocks with similar species for different reasons. As recently hypothesized (Seppänen et al. 2007), social information, which is an important benefit of flock participation (Goodale et al. 2010), is often most profitably obtained from ecologically similar heterospecifics. Support for this proposition has been found in contexts in which flock members usually obtain social information, namely, location of food (e.g., Krebs 1973) and threat of predation (Fallow et al. 2011). Alternately, associating with similar species might be a way for species to obtain group-living benefits, which are normally linked to single-species groups, without suffering the concomitant costs of intraspecific competition (Buskirk 1976; Beauchamp 2002; Péron and Crochet 2009); this pattern is extensively documented in fish schools (Krause and Ruxton 2002). Finally, irrespective of the nature of the benefit, associating with phenotypically similar rather than dissimilar species is likely to minimize the costs of behavioral adjustments that must be made in order to match activity with other flock participants (e.g., Hutto 1988; King and Rappole 2001). However, there is one important exception to the general pattern of association between similar species: one characteristic feature of flocks, especially in tropical areas, is the association of sallying bird species with actively foraging bird species. In these associations, the former can catch prey flushed out by the latter (e.g., Satischandra et al. 2007). Actively foraging species

are also known to benefit from these associations, because sallying species act as sentinels and warn the active foragers of the presence of predators (Goodale and Kotagama 2005; Satischandra et al. 2007). Consistent with these findings, we found that sallying species associated more strongly with species from other foraging guilds than with species from their own guilds (results not presented here); however, because sallying species formed a small proportion of the assemblage at all study sites, this association remains hidden within the overall pattern of phenotypic clumping.

Costs of Competition. Given that flocks present a setting in which competition appears to be unavoidable, similar species are expected to mutually exclude each other through interspecific territoriality (Graves and Gotelli 1993). Our findings raise the question of how phenotypically similar species reduce or avoid competition in flocks. One possibility is that the participation of similar species in the same flock is temporally separated. However, this is unlikely to have occurred in our analysis because in most of the studies we included, flocks were observed only long enough to obtain snapshots of composition. Therefore, species recorded as being part of the same flock were almost certainly present at the same time.

Another route to reduced competition between similar species in the same flock is increased niche divergence. Several studies have shown that similar species show greater niche separation when foraging together in flocks than when foraging alone (e.g., Alatalo et al. 1986; Latta and Wunderle 1996b). Thus, species might be willing to pay the cost of narrowed resource use in order to obtain the benefits of flock association. Alternately, foraging in flocks might facilitate access to resources that are not available otherwise. For example, studies have shown that species can extend their vertical (e.g., Herrera 1979; Satischandra et al. 2007) and horizontal (Powell 1989) foraging ranges by joining flocks. Such increases in foraging range potentially provide access to new resources, which might in turn relax competition.

Our results do not altogether preclude the possibility of competition between similar species. Although we focused only on interactions among the pool of flock participants, competition might have already resulted in certain species being excluded from flocks altogether (Narcissus effect; Colwell and Winkler 1984). Even among flock participants, there might be a threshold level of species similarity above which competition leads to mutual exclusion. For example, Graves and Gotelli (1993) showed that of three *Xiphorhynchus* woodcreeper species found in a Peruvian rain forest, the two similarly sized species never occurred together in the same flocks but each co-occurred with the larger species independently. There might be other such examples in our data sets that remain undetected due to

the coarse scale of our analysis. Direct measurements of species-resource use and overlap will provide a more nuanced understanding of this relationship.

*Incorporating Facilitation between Similar Species
into Community Ecology*

Until recently, community assembly was examined largely through the lenses of competition and habitat filtering (e.g., Webb et al. 2002; Cavender-Bares et al. 2009; Pausas and Verdú 2010). Recent conceptual work has highlighted the need to also consider positive interactions between species when interpreting community patterns (Bertness and Callaway 1994; Bruno et al. 2003); however, these studies considered only positive interactions between dissimilar species (e.g., nurse plant–seedling interactions: Valiente-Banuet and Verdú 2007). Our study provides an important extension to this idea by describing assembly patterns that are a likely outcome of facilitation between similar species. Our findings and those of earlier conceptual work together make it clear that there are no simple inferences to be drawn from looking at community-level patterns, because the same pattern can result from different mechanisms. Phenotypic overdispersion can be the result of competition between similar species or facilitation between dissimilar species. Phenotypic clumping can reflect abiotic filtering, facilitation between similar species (as our study has shown), or competition between dissimilar species (Mayfield and Levine 2010). Moreover, even an overall random community pattern can be produced as a result of equal proportions of two opposing interactions. Therefore, we advocate more circumspection in interpreting overall community patterns, and we recommend the use of species pairwise approaches and mechanistic understanding of interactions, wherever possible, in future community-assembly research (see also Ulrich and Gotelli 2012).

More fundamentally, our findings question the general stereotyping of ecologically similar species as competitors. Although there has been strong theoretical support for the expectation that similar species compete and as such avoid each other (Dayan and Simberloff 2005), our study describes the exact opposite pattern. This is not surprising when one considers that similar species are similar not only in the resources they compete for but also in other aspects of their ecologies, such as the identities of their predators, pathogens, pollinators, and seed dispersers (Seppänen et al 2007; Beltrán et al. 2012). As a result, if association is beneficial in any of these contexts (e.g., social information about predators: Seppänen et al 2007; joint attraction of pollinators: Sargent and Ackerly 2008), it is likely that these benefits are more profitably obtained from similar rather than dissimilar species (Seppänen et al

2007). Therefore, we believe that a more general and realistic characterization of interactions between similar species is as a dynamic trade-off between the costs of competition and the benefits of facilitation. In most cases, associational benefits presumably do not play a role and therefore, the net interaction is negative (and the stereotype is accurate). However, under conditions where heterospecific association is important, the nature of the interaction will depend on how these costs and benefits trade off. Over longer time periods, the trade-off between facilitation and competition is also likely to play itself out in terms of niche evolution and divergence (Bruno et al. 2003): niches of phenotypically similar species may diverge sufficiently to avoid competition, but not so much that the benefits of association are lost (Seppänen et al 2007).

The critical question is, how general are these patterns? To our knowledge, flocks are only the third documented example, after plant species that share pollinators (Sargent and Ackerly 2008) and Müllerian mimicry rings in butterflies (Elias et al. 2008), of a system that shows phenotypic clumping as a result of facilitative interactions. However, given the numerous taxa and contexts in which positive interactions and heterospecific associations occur (Seppänen et al. 2007; Goodale et al. 2010), this pattern may be more prevalent than is currently known. For example, in plants, associations between similar species are likely among those that share mycorrhizal networks, pathogens, and seed dispersers (Beltrán et al. 2012). In fact, we believe that viewing facilitation as a continuum will provide useful insights. In cases where intraspecific competition is not strong, positive interactions are expected between conspecifics (McIntire and Fajardo 2011). In cases where strong intraspecific competition prevents association between conspecifics, species might instead choose to associate with similar heterospecifics (Buskirk 1976; Beauchamp 2002; Péron and Crochet 2009). As the costs of interspecific competition increase, association is likely to be observed between more and more dissimilar species. When viewed in this fashion, association based on similarity might be a much more common phenomenon than is currently believed.

Acknowledgments

We thank the Ministry of Environment and Forests, Government of India, for supporting this study. Additional funding and logistical support for individual studies came from the International Foundation for Science (grant D/4910-1), the National Geographic Society, the World Nature Association, the U.S. National Park Service, the Gujarat Ecological Education and Research Foundation, the Taiwan Forestry Research Institute, the Institute of

Statistical Science Academia Sinica, the National Science Council of Taiwan, Environment Canada, Parks Canada, the National Science Foundation (International Research Fellowship Program grant 0601909), the Academy of Finland (project 138049), the Canadian Wildlife Service, the Prince Albert Model Forest (project 211), Stony Brook University, the Fulbright U.S. Student Program, the World Wildlife Fund, the Smithsonian Institution, the National Fish and Wildlife Foundation, the U.S. Agency for International Development, the Wildlife Institute of India, the Division of Biological Sciences at the University of Missouri–Columbia, the Asian Development Bank, the Department of National Parks Wildlife and Plant Conservation (Thailand), the National University of Singapore, and the Forest Department of Sri Lanka. We also acknowledge the help of N. Gotelli, C. Graham, F. Hsieh, N. V. Joshi, V. C. Soni, and numerous volunteers and colleagues. Finally, we thank the reviewers and the editors for their valuable comments and suggestions.

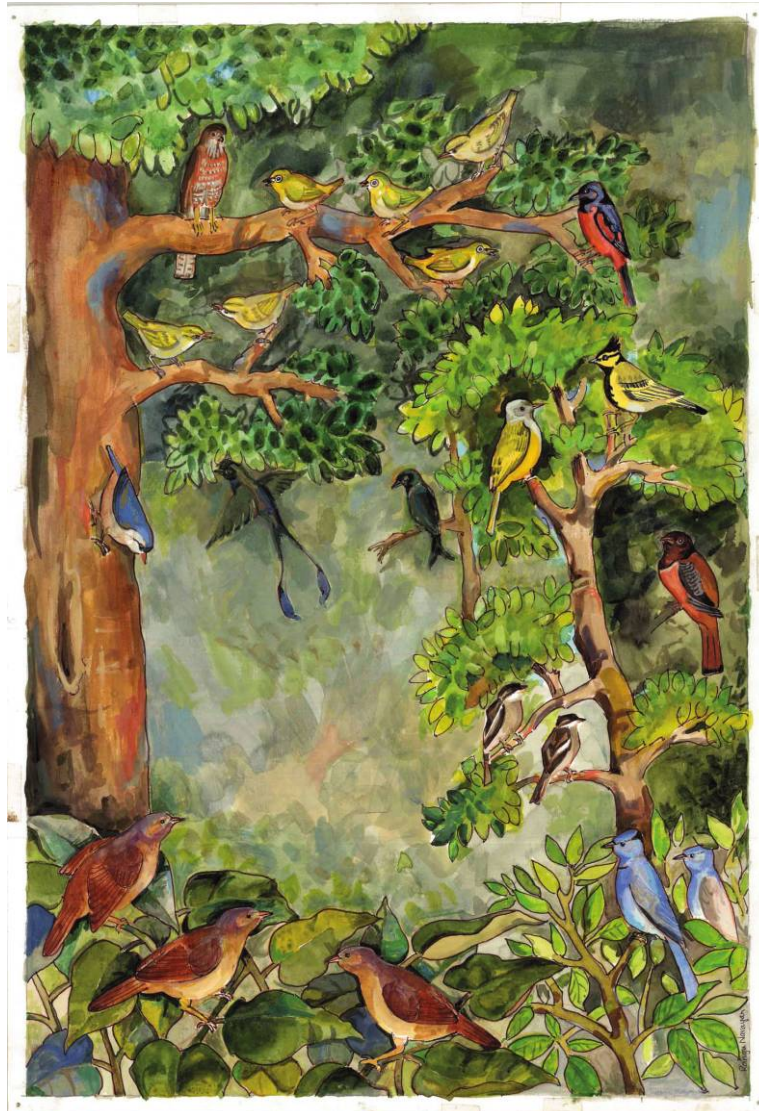
Literature Cited

- Alatalo, R. V., L. Gustafsson, and A. Lundberg. 1986. Interspecific competition and niche changes in tits (*Parus* spp.): evaluation of non-experimental data. *American Naturalist* 127:819–834.
- Beauchamp, G. 2002. Higher-level evolution of intraspecific flock-feeding in birds. *Behavioral Ecology and Sociobiology* 51:480–487.
- Beltrán, E., A. Valiente-Banuet, and M. Verdú. 2012. Trait divergence and indirect interactions allow facilitation of congeneric species. *Annals of Botany*, doi:10.1093/aob/mcs089.
- Bertness, M. D., and R. Callaway. 1994. Positive interactions in communities. *Trends in Ecology & Evolution* 9:191–193.
- Bruno, J. F., J. J. Stachowicz, and M. D. Bertness. 2003. Inclusion of facilitation into ecological theory. *Trends in Ecology & Evolution* 18:119–125.
- Buskirk, W. H. 1976. Social systems in a tropical forest avifauna. *American Naturalist* 110:293–310.
- Canales-Delgado, J. C., L. M. Scott-Morales, M. C. Correa, and M. P. Moreno. 2008. Observations on flocking behavior of Worthen's sparrows (*Spizella wortheni*) and occurrence in mixed-species flocks. *Wilson's Journal of Ornithology* 120:569–574.
- Cavender-Bares, J., D. D. Ackerly, D. A. Baum, and F. A. Bazzaz. 2004. Phylogenetic overdispersion in Floridian oak communities. *American Naturalist* 163:823–843.
- Cavender-Bares, J., K. H. Kozak, P. V. A. Fine, and S. W. Kembel. 2009. The merging of community ecology and phylogenetic biology. *Ecology Letters* 12:693–715.
- Chen, C.-C., and F. Hsieh. 2002. Composition and foraging behavior of mixed-species flocks led by the grey-cheeked fulvetta in Fushan Experimental Forest, Taiwan. *Ibis* 144:317–330.
- Colwell, R. K., and D. W. Winkler. 1984. A null model for null models in biogeography. Pages 344–359 in D. Strong, D. Simberloff, L. Abele, and A. Thistle, eds. *Ecological communities: conceptual issues and the evidence*. Princeton University Press, Princeton, NJ.
- Croxall, J. P. 1976. The composition and behaviour of some mixed-species bird flocks in Sarawak. *Ibis* 118:333–346.
- Davis, D. E. 1946. A seasonal analysis of mixed flocks of birds in Brazil. *Ecology* 27:168–181.
- Dayan, T., and D. Simberloff. 2005. Ecological and community-wide character displacement: the next generation. *Ecology Letters* 8:875–894.
- Develey, P. F., and C. A. Peres. 2000. Resource seasonality and the structure of mixed species bird flocks in a coastal Atlantic forest of southeastern Brazil. *Journal of Tropical Ecology* 16:33–53.
- Diamond, J. M. 1975. Assembly of species communities. Pages 342–444 in M. L. Cody and J. M. Diamond, eds. *Ecology and evolution of communities*. Belknap, Cambridge, MA.
- Dunning, J. D., Jr. 2008. *CRC handbook of avian body masses*. CRC, Boca Raton, FL.
- Elias, M., Z. Gompert, C. Jiggins, and K. Willmott. 2008. Mutualistic interactions drive ecological niche convergence in a diverse butterfly community. *PLoS Biology* 6:e300.
- Ewert, D. N., and R. A. Askins. 1991. Flocking behavior of migratory warblers in winter in the Virgin Islands. *Condor* 93:864–868.
- Fallow, P. M., J. L. Gardner, and R. M. Magrath. 2011. Sound familiar? acoustic similarity provokes responses to unfamiliar heterospecific alarm calls. *Behavioral Ecology* 22:401–410.
- Farley, E. A., K. E. Sieving, and T. A. Contreras. 2008. Characterizing complex mixed-species bird flocks using an objective method for determining species participation. *Journal of Ornithology* 149:451–468.
- Fayle, T. M., and A. Manica. 2010. Reducing over-reporting of deterministic co-occurrence patterns in biotic communities. *Ecological Modelling* 221:2237–2242.
- Fox, B. J. 1987. Species assembly and the evolution of community structure. *Evolutionary Ecology* 1:201–213.
- Gómez, J. P., G. A. Bravo, R. T. Brumfield, J. G. Tello, and C. D. Cadena. 2010. A phylogenetic approach to disentangling the role of competition and habitat filtering in community assembly of Neotropical forest birds. *Journal of Animal Ecology* 79:1181–1192.
- Goodale, E., G. Beauchamp, R. D. Magrath, J. C. Nieh, and G. D. Ruxton. 2010. Interspecific information transfer influences animal community structure. *Trends in Ecology & Evolution* 25:354–361.
- Goodale, E., and S. W. Kotagama. 2005. Alarm-calling in Sri Lankan mixed-species bird flocks. *Auk* 122:108–120.
- Goodale, E., and Sridhar, H., eds. 2010. *Mixed-species bird flocks: a bibliography*. <https://sites.google.com/site/mixedspeciesbirdflocks/>.
- Gotelli, N. J., and G. L. Entsminger. 2001. *EcoSim: null models software for ecology, version 1.0*. <http://garyentsminger.com/ecosim/index.htm>.
- Gotelli, N. J., and G. R. Graves. 1996. *Null models in ecology*. Smithsonian Institution Press, Washington, DC.
- Gotelli, N. J., and D. J. McCabe. 2002. Species co-occurrence: a meta-analysis of J. M. Diamond's assembly rules model. *Ecology* 83:2091–2096.
- Gotelli, N. J., and W. Ulrich. 2010. The empirical Bayes approach as a tool to identify non-random species associations. *Oecologia (Berlin)* 162:463–477.
- Gram, W. K. 1998. Winter participation by Neotropical migrant and resident birds in mixed-species flocks in northeastern Mexico. *Condor* 100:44–53.
- Graves, G. R., and N. J. Gotelli. 1993. Assembly of avian mixed-species flocks in Amazonia. *Proceedings of the National Academy of Sciences of the USA* 90:1388–1391.
- Greenberg, R. 2000. Birds of many feathers: the formation and structure of mixed-species flocks of forest birds. Pages 521–558 in S.

- Boinski and P. A. Gerber, eds. On the move: how and why animals travel in groups. University of Chicago Press, Chicago.
- Gross, K. 2008. Positive interactions among competitors can produce species-rich communities. *Ecology Letters* 11:929–936.
- Hart, P. J., and L. A. Freed. 2003. Structure and dynamics of mixed-species flocks in a Hawaiian rain forest. *Auk* 120:82–95.
- Herrera, C. M. 1979. Ecological aspects of heterospecific flock formation in a Mediterranean passerine bird community. *Oikos* 33: 85–96.
- Hobson, K. A., and S. Van Wilgenburg. 2006. Composition and timing of postbreeding multispecies feeding flocks of boreal forest passerines in western Canada. *Wilson's Journal of Ornithology* 118:164–172.
- Hutto, R. L. 1987. A description of mixed-species insectivorous bird flocks in western Mexico. *Condor* 89:282–292.
- . 1988. Foraging behavior patterns suggest a possible cost associated with participation in mixed-species bird flocks. *Oikos* 51:79–83.
- . 1994. The composition and social organization of mixed-species flocks in a tropical deciduous forest in western Mexico. *Condor* 96:105–118.
- Jullien, M., and J. Clobert. 2000. The survival value of flocking in Neotropical birds: reality or fiction? *Ecology* 81:3416–3430.
- King, D. I., and J. H. Rappole. 2001. Mixed species bird flocks in dipterocarp forest of north central Burma (Myanmar). *Ibis* 143: 380–390.
- Knowlton, J. L., and C. H. Graham. 2011. Species interactions are disrupted by habitat degradation in the highly threatened Tumbesian region of Ecuador. *Ecological Applications* 21:2974–2986.
- Kotagama, S. W., and E. Goodale. 2004. The composition and spatial organization of mixed-species flocks in a Sri Lankan rainforest. *Forktail* 20:63–70.
- Krause, J., and G. D. Ruxton. 2002. Heterogeneity and homogeneity of group membership. Pages 87–103 *in* Living in groups. Oxford Series in Ecology and Evolution. Oxford University Press, Oxford.
- Krebs, J. R. 1973. Social learning and the significance of mixed-species flocks of chickadees (*Parus* spp.). *Canadian Journal of Zoology* 51:1275–1288.
- Latta, S. C., and J. M. Wunderle. 1996a. The composition and foraging ecology of mixed-species flocks in pine forests of Hispaniola. *Condor* 98:595–607.
- . 1996b. Ecological relationships of two todies in Hispaniola: effects of habitat and flocking. *Condor* 98:769–779.
- Lee, T. M., M. C. K. Soh, N. Sodhi, L. P. Koh, and S. L.-H. Lim. 2005. Effects of habitat disturbance on mixed species bird flocks in a tropical sub-montane rainforest. *Biological Conservation* 122: 193–204.
- Leyequién, E., W. F. de Boer, and A. Cleef. 2007. Influence of body size on coexistence of bird species. *Ecological Research* 22:735–741.
- Mayfield, M. M., and J. M. Levine. 2010. Opposing effects of competitive exclusion on the phylogenetic structure of communities. *Ecology Letters* 13:1085–1093.
- McIntire, E. J. B., and A. Fajardo. 2011. Facilitation within species: a possible origin of group-selected superorganisms. *American Naturalist* 178:88–97.
- Munn, C. A. 1985. Permanent canopy and understory flocks in Amazonia: species composition and population density. *Ornithological Monographs* 36:683–712.
- Nimnuan, S., P. D. Round, and G. A. Gale. 2004. Structure and composition of mixed-species bird flocks in Khao Yai National Park. *Natural History Bulletin of the Siam Society* 52:71–79.
- Nizam, B. Z., U. K. G. K. Padmalal, and S. W. Kotagama. 2007. Habitat relationships of mixed-species foraging flocks of birds in three different altitudes of the northern flank of the Knuckles Conservation Forest in Sri Lanka. *Annual Academic Sessions of the Open University of Sri Lanka* 4:93–95.
- Pausas, J. G., and M. Verdú. 2010. The jungle of methods for evaluating phenotypic and phylogenetic structure of communities. *BioScience* 60:614–625.
- Peiman, K. S., and B. W. Robinson. 2010. Ecology and evolution of resource-related heterospecific aggression. *Quarterly Review of Biology* 85:133–158.
- Péron, G., and P.-A. Crochet. 2009. Edge effect and structure of mixed-species bird flocks in an Afrotropical lowland forest. *Journal of Ornithology* 150:585–599.
- Powell, G. V. N. 1989. On the possible contribution of mixed species flocks to species richness in tropical avifaunas. *Behavioral Ecology and Sociobiology* 24:387–393.
- Remsen, J. V. Jr., and S. K. Robinson. 1990. A classification scheme for birds in terrestrial foraging habitats. *Studies in Avian Biology* 13:144–160.
- Robin, V. V., and P. Davidar. 2002. The vertical stratification of birds in mixed-species flocks at Parambikulam, South India: a comparison between two habitats. *Journal of the Bombay Natural History Society* 99:389–399.
- Rodewald, A. D., and P. G. Rodewald. 2003. Mixed-species bird flocks in primary and regenerating montane forests in Ecuador. *Cotinga* 19:51–54.
- Sargent, R. D., and D. D. Ackerly. 2008. Plant-pollinator interactions and the assembly of plant communities. *Trends in Ecology & Evolution* 23:123–130.
- Satischandra, S. H. K., E. P. Kudavidanage, S. W. Kotagama, and E. Goodale. 2007. The benefits of joining mixed-species flocks for greater racket-tailed drongos *Dicrurus paradiseus*. *Forktail* 23:145–148.
- Seppänen, J.-T., J. T. Forsman, M. Mönkkönen, and R. L. Thomson. 2007. Social information use is a process across time, space, and ecology, reaching heterospecifics. *Ecology* 88:1622–1633.
- Sfenthourakis, S., E. Tzanatos, and S. Giokas. 2006. Species co-occurrence: the case of congeneric species and a causal approach to patterns of species association. *Global Ecology and Biogeography* 15:39–49.
- Sridhar, H., and K. Sankar. 2008. Effects of habitat degradation on mixed-species bird flocks in Indian rain forests. *Journal of Tropical Ecology* 24:135–147.
- Srinivasan, U., R. H. Raza, and S. Quader. 2010. The nuclear question: rethinking species importance in multi-species animal groups. *Journal of Animal Ecology* 79:948–954.
- Thiollay, J.-M. 1999. Frequency of mixed species flocking in tropical forest birds and correlates of predation risk: an intertropical comparison. *Journal of Avian Biology* 30:282–294.
- Thomson, R. L., and J. W. H. Ferguson. 2007. Composition and foraging behavior of mixed-species flocks in two adjacent African woodland habitats: a spatial and temporal perspective. *Ostrich* 78: 65–73.
- Trivedi, P. 2006. Ecology and conservation of avifauna in some forested areas in Gujarat, India. PhD diss. Saurashtra University, Rajkot.

- Ulrich, W., and N. J. Gotelli. 2012. Pattern detection in null model analysis. *Oikos*, doi:10.1111/j.1600-0706.2012.20325.x.
- Valiente-Banuet, M., and M. Verdú. 2007. Facilitation can increase the phylogenetic diversity of plant communities. *Ecology Letters* 10:1029–1036.
- Webb, C. O., D. D. Ackerly, M. A. McPeck, and M. J. Donoghue. 2002. Phylogenies and community ecology. *Annual Review of Ecology and Systematics* 33:475–505.
- Weiher, E., D. Freund, T. Bunton, A. Stefanski, T. Lee, and S. Ben-tivenga. 2011. Advances, challenges and a developing synthesis of community ecology theory. *Philosophical Transactions of the Royal Society B: Biological Sciences* 366:2403–2413.
- Weiher, E., and P. A. Keddy. 1999. *Ecological assembly rules: perspectives, advances, retreats*. Cambridge University Press, Cambridge.
- Wilson, D. S. 1975. The adequacy of body size as a niche difference. *American Naturalist* 109:769–784.

Associate Editor: Axel G. Rossberg
Editor: Judith L. Bronstein



A mixed-species bird flock from a tropical evergreen forest in the Western Ghats, India. Photo credit: Rangu Narayan.